

GEO MASTER DYNAMIC II



TECHNICAL DATA

Camera height adjustment:	Automatic
Camera resolution:	5 Megapixels
Wheel compensation:	Run out
Clamps:	4-points
Tv:	Yes screen dimension 32"
Monitor:	No
Buildin database:	Yes
Animation 3d with hints:	Yes
Compatible:	4-post lift, 2-post lift scissors lift, canal
Power supply:	230V50Hz

Device for fast and precise measurement of geometry in passenger and delivery vehicles

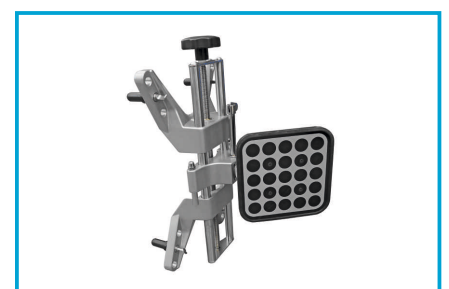
- ♦ **Measurement performed in a three-dimensional system of chassis parameter modeling**
- ♦ Image based on precise measuring cameras
- ♦ 4 passive targets requiring no electronics
- ♦ **Does not require perfectly leveled floor**
- ♦ Intuitive and user-friendly interface
- ♦ **Guidance system with animations on what, where, and how to adjust**
- ♦ Compensation through vehicle rolling
- ♦ **Camera height automatically adjustable**
- ♦ Multilingual software, including Polish language!
- ♦ **printer in standard**



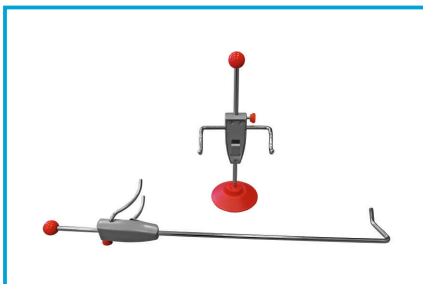
PRECISE MEASURING CAMERA



TV 32" IN STANDARD



4-POINTS CLAMPS



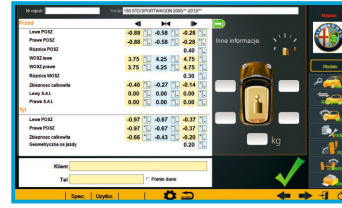
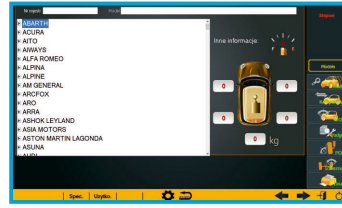
BRAKE AND WHEEL LOCK



MOUSE AN KEYBOARD TRAY

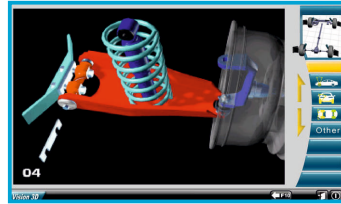
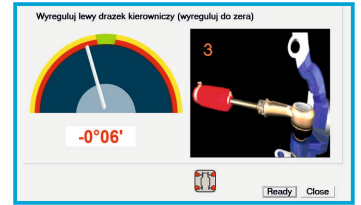


ALUMINIUM TURNTABLES

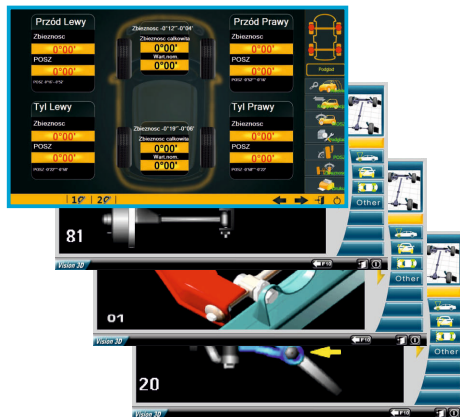


Menu in **polish language!**
Simple and intuitive operation
Wide selection of vehicle brands!
(including non-standard ones, e.g. ALPINA)

Adjustment system with intelligent hints along with animations!



Throughout the entire adjustment process we are led by the hand!



MEASURING POSSIBILITIES:

- Total toe, semi-toe axes of the front and rear.
- Camber angle of the front and rear axles
- Caster and camber angle of the steering axle misalignment set
- The wheel steering angle, the geometric axis angle of the vehicle
- The difference in toe convergence
- The difference between the wheel camber angle and the steering knuckle caster angle
- A series of other additional measurements, such as wheelbase, track width

NORTEC NAVEA FIBRY

Model: 119 ST (SPORTWAGON 2005"-2013")

Axis	Wheel	Steering	SAI	SAE	SAE	SAE	SAE
Front	Left	XXX	-0.00	-0.00	0.00	0.00	0.00
	Right	XXX	0.00	0.00	0.00	0.00	0.00
	Left	XXX	0.00	0.00	0.00	0.00	0.00
	Right	XXX	0.00	0.00	0.00	0.00	0.00
Rear	Left	XXX	0.00	0.00	0.00	0.00	0.00
	Right	XXX	0.00	0.00	0.00	0.00	0.00
	Left	XXX	0.00	0.00	0.00	0.00	0.00
	Right	XXX	0.00	0.00	0.00	0.00	0.00



OPTIONAL STANDS FOR CLAMPS